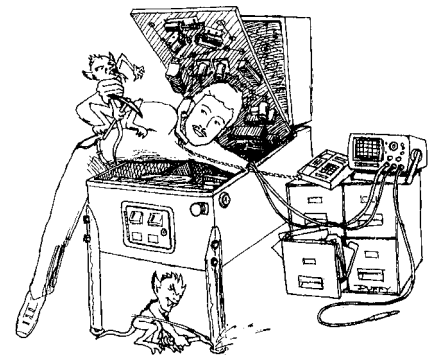




Nº 144 SERVICE BULLETIN



Joe Blackwell Director, Parts Sales & Technical Support	Susan White Parts Sales Manager	Patty Schraps Parts Stockroom Manager	Chas Siddiqi Technical Support Engineer	Patrick Powers Technical Support Engineer	J. Alfer Technical Support Doc. Administrator
---	---	---	---	---	---

TO: Parts & Service Managers

DATE: December 9, 2003

SUBJ: The Lord of the Rings™
Spanish Display & Speech Available

THE LORD OF THE RINGS™

ANNOUNCEMENT:

The Lord of the Rings™ Pinball now has Spanish Display & Speech available for your game!

HOW TO GET IT:

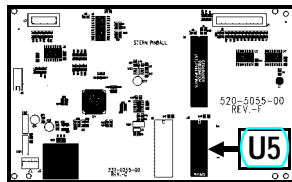
Order the **LOTR Spanish ROM Kit Set** (SPI Part Number **502-5020-00**) from your local distributor (listing in your Manual or on our website). If you have a ROM Burner, you can also download it from our website via www.sternpinball.com/techsupport.htm and click **ROM CODE LIBRARY** (then click *The Lord of the Rings™*). **Replace the following ROMS on your CPU Sound II & Display Controller Boards in the Backbox:**

ROM Name	Chip Size	Program Part Nr.	Version and/or Checksum	Board Name	Board Location
SOUND	512K	965-0401-80L	SP LOTR \$6896	CPU SND II	U7
CPU GAME	1MB	965-0402-80L	v4.01L / \$04FF	CPU SND II	U210
VOICE 1	8MB	965-0403-80L	v1.00 SP LOTR \$DFD0	CPU SND II	U17
VOICE 2	8MB	965-0404-80L	v1.00 SP LOTR \$A4BC	CPU SND II	U21
VOICE 3	8MB	965-0405-80L	v1.00 SP LOTR \$7EE7	CPU SND II	U36
VOICE 4	8MB	965-0406-80L	v1.00 SP LOTR \$1201	CPU SND II	U37
DISPLAY	4MB	965-0407-80L	v4.03L / \$FA7B	Display Controller	U5 (ROM 0)

Versions and checksums stated above are current as of this dated Service Bulletin. EPROM Labels will show the current version and checksum.

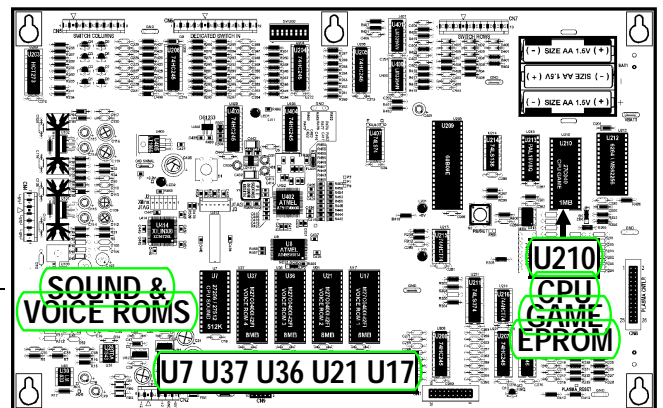
Display Controller Bd. ►

The Display Controller has the Display EPROM (Location: U5 / ROM 0). This board is located behind the 128 X 32 Dot Matrix Display Board.



WHEN REPLACING:

Always **POWER THE GAME OFF** when servicing your Pinball Game! **TAKE CARE** WHEN REMOVING EPROMS. ENSURE TOOL USED IS BETWEEN THE ROM AND THE SOCKET. WHEN REPLACING, ENSURE ALL THE PINS ARE LINED UP PROPERLY BEFORE PUSHING THEM DOWN. DOUBLE CHECK TO ENSURE EACH ROM IS SEATED PROPERLY, WITH THE NOTCH SIDE LINED UP IN THE SAME DIRECTION AS THE OTHER ICs ON THE BOARD.



► CPU/Sound Bd. II w/ATMEL

Please phone or eMail with any questions or comments at the below numbers or address.

• 2020 Janice Ave. • Melrose Park, IL 60160 • Tel 708-345-7700 (Option 1) • Toll-Free (USA/Canada) 1-800-542-5377 • Fax 708-345-7889 •